

# Common Sightings

## ANIMALS



White-Tailed Deer



Red Fox



Mute Swan



Downy Woodpecker



Painted Turtle



Phragmites



Cottonwood Tree



Poison Ivy

## Knabusch MATH & SCIENCE CENTER

6670 Waters Edge Drive, Monroe  
(in Bolles Harbor)

### CONTACT

**Nicole Shaughnessy**

*Knabusch Math and Science Center Coordinator*

**734-265-5295**

[nicole.shaughnessy@monroeisd.us](mailto:nicole.shaughnessy@monroeisd.us)



**Visit us to learn more at:**  
[www.facebook.com/KnabuschCenter](https://www.facebook.com/KnabuschCenter)



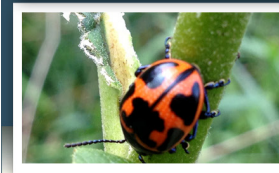
**MONROE COUNTY  
INTERMEDIATE SCHOOL DISTRICT**

1101 S. Raisinville Road  
Monroe, Michigan 48161  
734.242.5799 • [www.monroeisd.us](http://www.monroeisd.us)

The Monroe County Intermediate School District does not discriminate on the basis of religion, race, color, national origin, sex, disability, age, height, weight, marital status or familial status in its programs, activities or in employment. The following person has been designated to handle inquiries regarding the non-discrimination policies: Elizabeth J. Taylor, Assistant Superintendent for Human Resources and Legal Counsel, 1101 S. Raisinville Road, Monroe Michigan 48161; Telephone: 734.322.2640.

# Knabusch

MATH AND SCIENCE CENTER



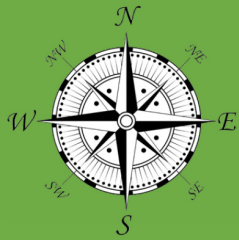
## CONNECTING CHILDREN TO NATURE

6670 Waters Edge Drive  
Monroe, MI 48161  
(in Bolles Harbor)  
734-265-5295

 [KnabuschCenter](https://www.facebook.com/KnabuschCenter)



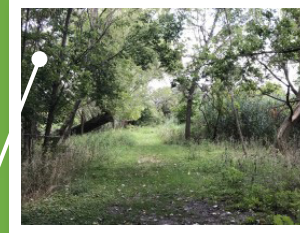
*The Knabusch Math and Science Center is a partnership with the Monroe County ISD, Monroe Public Schools and the Michigan Department of Natural Resources.*



(6) Wetlands Trail



(7) Back Trail Split



(8) Swamp View



Waters Edge Drive

KMSC

Shed

Main Pond

Wetlands Area

Swamp

Back Pond

Channel

1

2

3

6

7

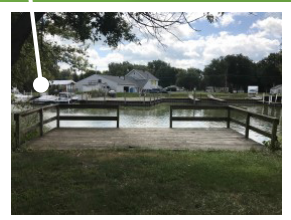
8

9

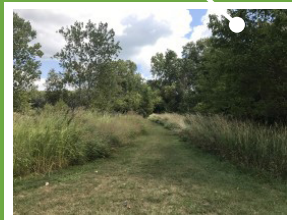
4

5

(1) Main Pond Entrance



(2) Channel Dock Access



(3) Main Trailhead



(4) Channel View 1



(5) Channel View 2



(9) Channel View 3