

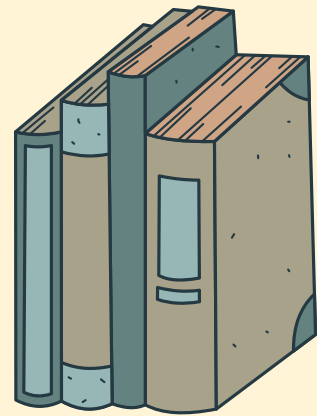
WE DO BELIEVE IT'S TIME FOR A NEW ADVENTURE



Carl Graves, LMSW
Margot Lechlak, LMSW
Shawna Mann, MA, LLPC, NCC



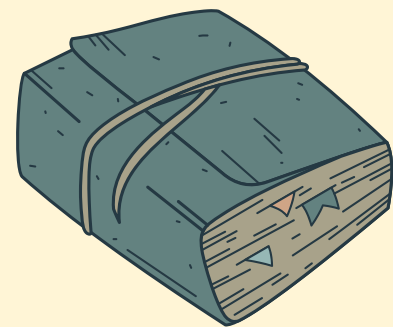
OBJECTIVES



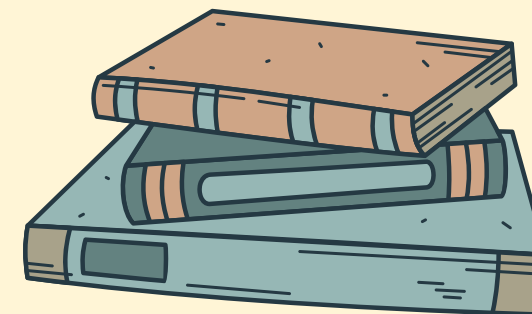
**Identify the 7
adventure beliefs**



**Explain the link between
adventure work and social
and emotional learning**



**Understand the impact
of the experiential
learning model**



**Leave with at least
one group
adventure activity**

GIANT ROCK PAPER SCISSORS

- With the person next to you, go back-to-back, and on the count of 3 try to MATCH each other!
- No strategizing ahead of time and no talking during the activity!




Rock



Paper



Scissors

The background features four stylized teal clouds with spiral patterns, positioned in the corners: top-left, top-right, bottom-left, and bottom-right. The text is centered horizontally between the top and bottom clouds.

ACTIVITY DEBRIEF

HOW IS SEL CONNECTED?

Let's look at the definition...

“the process through which all young people and adults acquire and apply the knowledge, skills, and attitudes to develop healthy identities, manage emotions and achieve personal and collective goals, feel and show empathy for others, establish and maintain positive relationships, and make responsible and caring decisions.”





THE 7 ADVENTURE BELIEFS

Trust

Safety

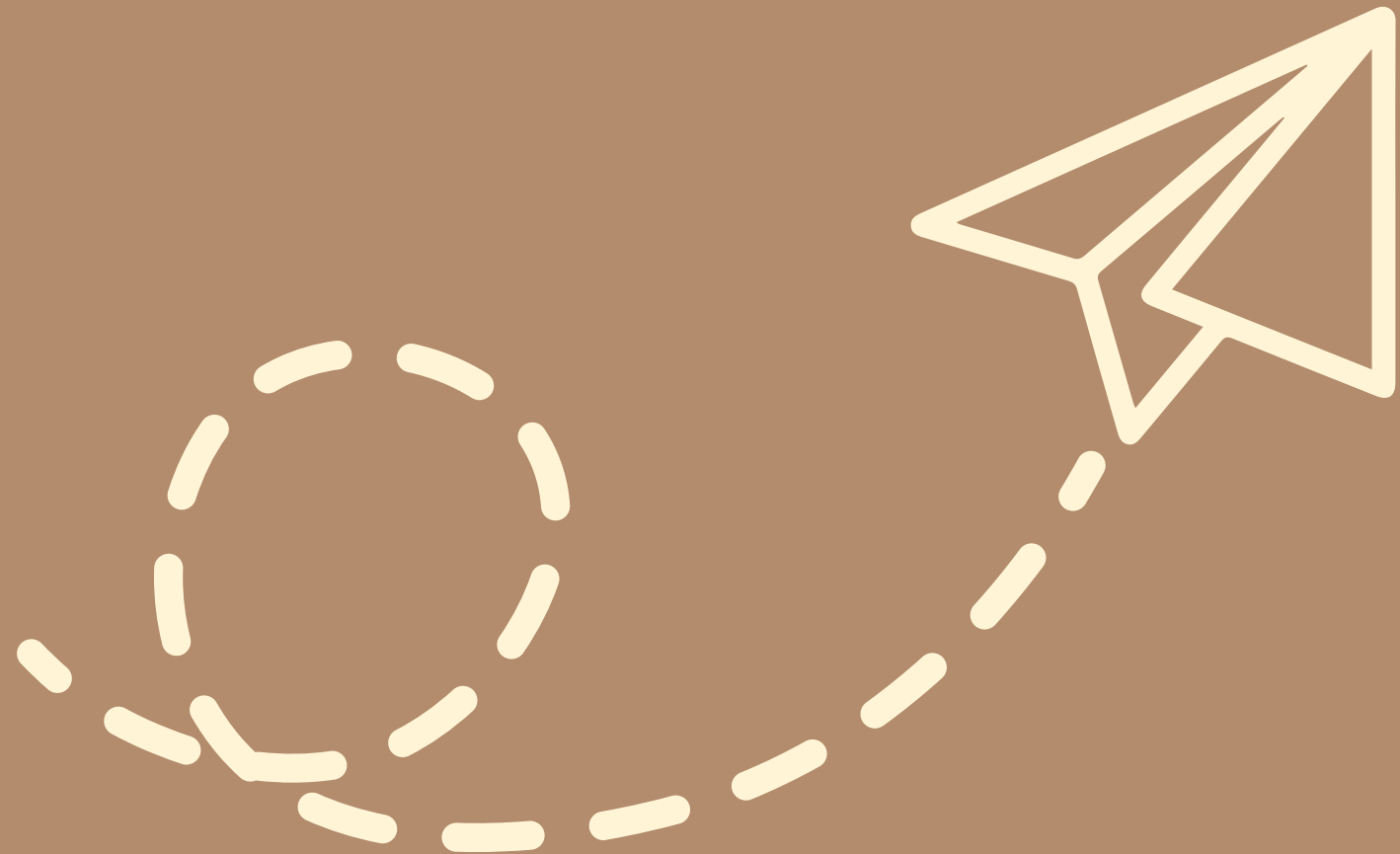
Belonging

Challenge

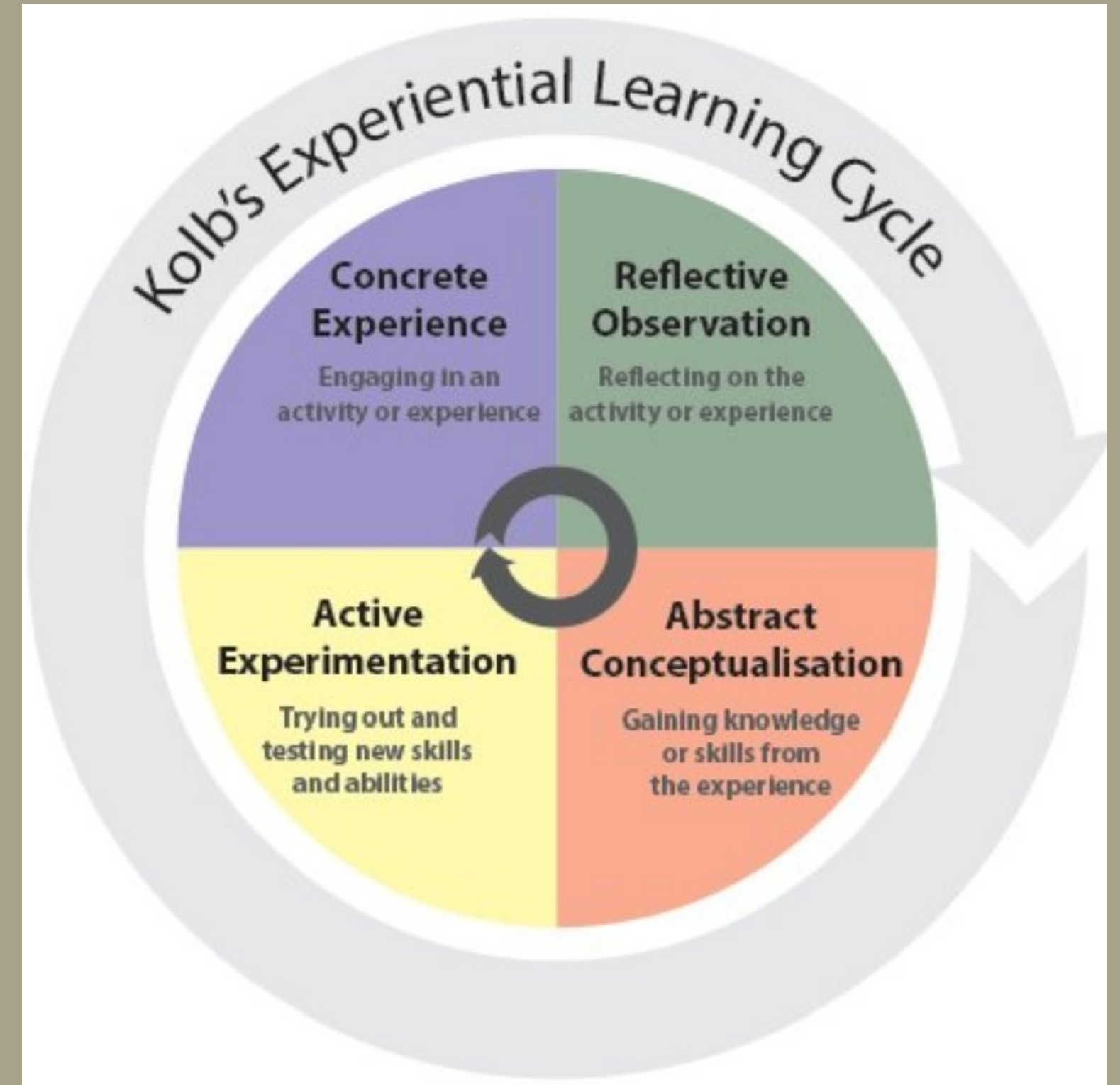
Enjoyment

Freedom/Empowerment

Effective Communication



Experiential Activities



Four stylized, cream-colored clouds with blue outlines are positioned in the corners of the slide. Two are in the top corners and two are in the bottom corners, framing the central text.

PERSPECTIVE CIRCLE



MCISD ADVENTURE PROGRAM



The goal of using Adventure in classrooms is to create welcoming, supportive, and caring students & classrooms. We trained key staff in each district to serve as Adventure Coaches.

The *Adventure Classrooms Program* uses a team approach to engage teachers, building social workers, and adventure coaches to implement weekly adventure-based learning within classrooms.

The *Adventure Therapy Group* is run by two clinical adventure therapists and 2 staff from CMH, aimed at supporting and building skills in youth who have a history of suspensions and substance use. Adventure Therapy is also used in the individual treatment setting.

PILOT STUDY PRELIMINARY DATA

Classroom Teams...

- 87% had a renewed sense of joy for their job
- 87% had increased belonging to MCISD work community
- 80% had increased confidence that they can accomplish their job well
- 93% had an increased sense of support by their colleagues

Teachers...

- 100% of teachers felt supported by their coaches
- Teachers saw an increase in student participation, collaboration, & listening

TESTIMONIALS



Teacher: Jen



Adventure Coach: Jason

The background is a solid teal color. There are four stylized yellow clouds with brown outlines. One cloud is at the top center, one is at the top right, one is at the bottom left, and one is at the bottom right. The clouds have a puffy, cartoonish appearance with some internal swirling lines.

ADVENTURE ACTIVITY #3




FUTURE FORECAST

INCREASED DATA COLLECTION

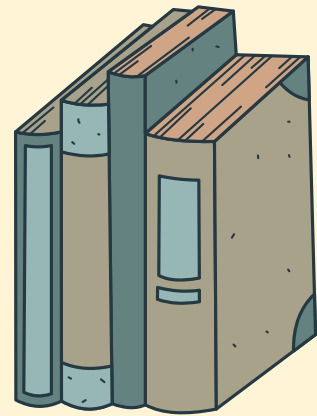
'22-'23 evaluation will focus on:

1. Updated classroom teams survey
2. Analyzing district student-level secondary data (attendance, suspensions, behavioral incidents)
3. Create a rubric for teachers to assess student behavior, classroom culture, and other potential student impact

COACH & CLASSROOM EXPANSION

1. Continue to train adventure coaches with an ultimate goal of an adventure coach in each building.
 2. Continue to expand the number of classrooms as number of coaches increase.
- 

RESOURCES



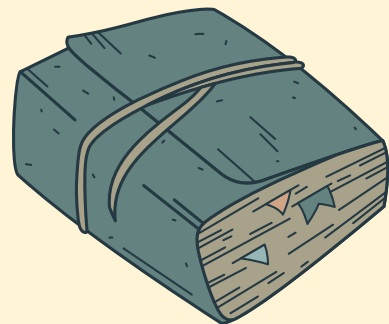
Power of One: Using Adventure and Experiential Activities Within One on One Counseling Sessions

D. Maurie Lung, Gary Stauffer, Tony Alvarez



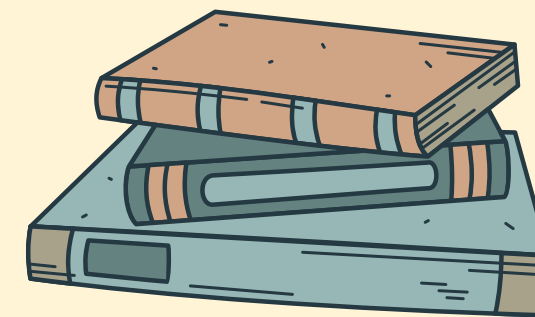
Social and Emotional Learning in Action: Experiential Activities to Positively Impact School Climate

Tara Flippo



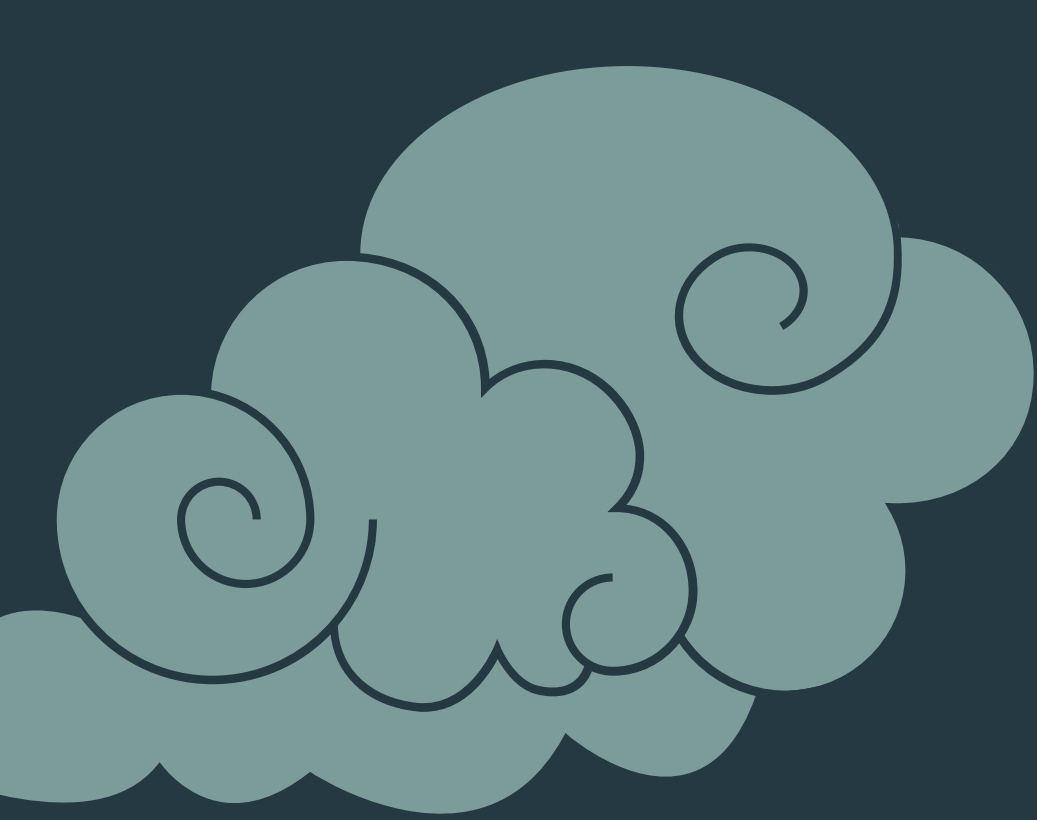
Adventure Group Psychotherapy: An Experiential Approach to Therapy

Tony G. Alvarez, Gary Stauffer, D. Maurie Lung, Kim Sacksteder, Bobbi Beale, Anita R. Tucker



Adventure Therapist Website

Nick Magle-Haberek, Kim Sacksteder



THANK YOU!

margot.lechlak@monroeisd.us

