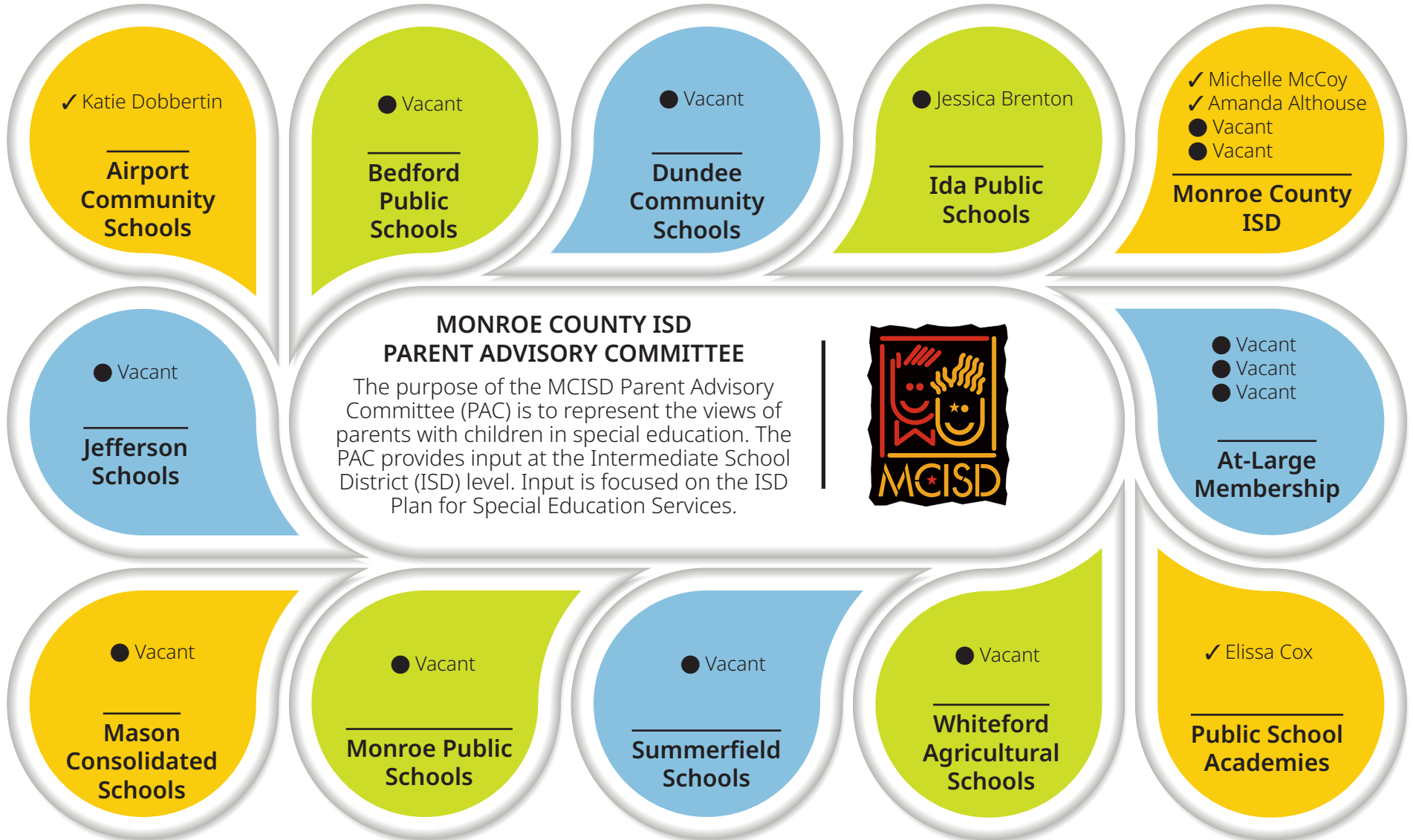


CURRENT SEATS AND VACANCIES



● = Vacant
✓ = Filled

MARSE R 340.1838 Parent advisory committee. Rule 138. (1) A parent advisory committee shall be appointed by each intermediate school district board. (a) The parent advisory committee and its officers shall consist only of parents of students with disabilities with **at least 1 parent from each constituent local school district and public school academy** unless no parent agrees to serve on the parent advisory committee to represent the constituent local school district or public school academy. (b) Each constituent local school district board of education and each public school academy board of directors shall nominate at least 1 parent. (c) The intermediate school district board of education may nominate additional members not to exceed 33 1/3% of the total parent advisory committee membership.