

Michigan Commission for the Blind

125 E Union St.
Flint MI 48502, 810-760-2030

Michigan Rehabilitation Services

903 S. Telegraph Rd. Ste B
Monroe MI 48161, 734-241-2440

Monroe Community Mental Health Authority

1001 South Raisinville Rd.
Monroe MI 48161, 800-866-7340 or 734-243-7340

Michigan Works!

1531 N Telegraph Rd Ste D
Monroe MI 48162, 734-240-7950

Monroe County Health Department

2353 S Custer Rd
Monroe MI 48161, 734-240-7800

Monroe County Library System

840 S Roessler St.
Monroe MI 48161, 734-241-5770

Monroe County Opportunity Program

1140 S Telegraph Rd. #4006
Monroe MI 48161, 734-241-2775

Monroe Housing Commission

20 N Roessler St.
Monroe MI 48162, 734-242-5880

United Way of Monroe/Lenawee Counties

216 N Monroe St. Monroe MI 48162, 734-242-1331

Bedford Township Housing Commission

8745 Lewis Ave Temperance MI 48182, 734-847-3950

CHS Group LLC

115 E Front St. Monroe MI 48161, 734-240-0185

Mastrofrancesco AFC Inc.

13795 Alton Rd.
Monroe MI 48161, 734-243-6140 or 419-340-5317

The Mon Arc of Monroe Inc.

6021 Parkside Dr. Monroe MI 48161
734-241-5881

A special note: It's very important to connect with adult service agencies early before the young adult leaves the school system. (In the case of housing, consideration should be given to making an application 2 -3 years ahead of need.) There will be a detailed application process; you will need to supply records from schools, doctors, and other service providers; and there will be waiting lists. But the advanced preparation and relationship that is built will help to ensure that important goals of life are achieved.

Transition doesn't just happen ...

you must be part of the planning process so the departure from school and entry into the adult community is successful and seamless. You will need to explore the available services to develop the combination that is right for you. Start planning early –work closely with school and adult service agencies ... and the road to transition will be the adventure of a lifetime!

Employment

Headed Toward the Future!

- Pursue additional training where needed
- Consider options including trade, technical or business school, college, or on-the-job training
- Obtain any assistive devices that will make employment and/or training more comfortable, more accessible, safer
- Submit personal information for any licenses needed for the workplace
- Seek out job placement assistance, including job leads, help with filling out applications, and interviewing practice
- Research available support services – local transportation, interpreters, readers, and other personal assistance
- Arrive on time, be honest and responsible ... you're on the road to the rest of your fascinating and rewarding life!



Congratulations!

FOR MORE INFORMATION, CONTACT:

Michelle Parrish, Ed.S
(734)342-8516
michelle.parrish@monroeisd.us



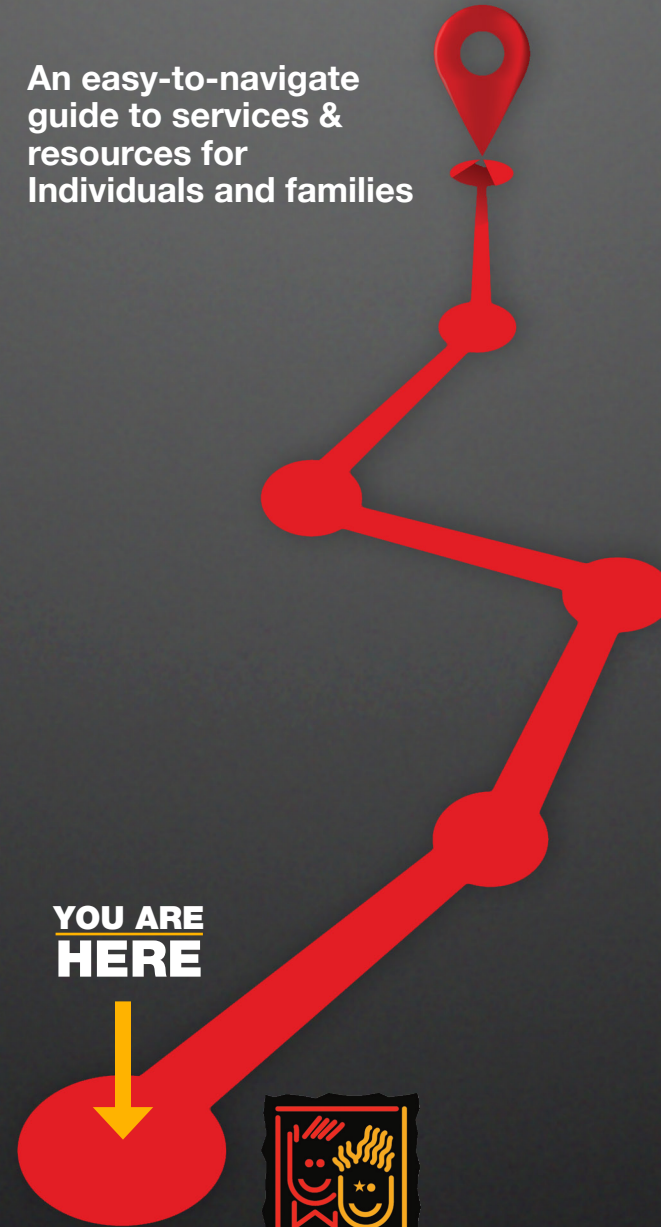
**MONROE COUNTY
INTERMEDIATE SCHOOL DISTRICT**
1101 S. Raisinville Road
Monroe, Michigan 48161
www.monroeisd.us



The Monroe County Intermediate School District does not discriminate on the basis of religion, race, color, national origin, sex, disability, age, height, weight, marital status or familial status in its programs, activities or in employment. The following person has been designated to handle inquiries regarding the non-discrimination policies: Eric Feldman, Assistant Superintendent for Human Resources and Legal Services, 1101 S. Raisinville Road, Monroe Michigan 48161; Telephone: 734.322.2640.

Your Road Map to TRANSITION

An easy-to-navigate
guide to services &
resources for
Individuals and families



The Monroe County Transition Council, a collaborative body of service organizations with the Monroe County Intermediate School District, is dedicated to serving the county's special population – through all stages of living – with advocacy, leadership, and action, promoting a life full of independence, dignity, and accomplishment.



The organizations mentioned in this "map" exist to serve you and will welcome your call. **Please don't hesitate to call upon any of the listed resources**—they are in the business of helping individuals and families reach their destinations and goals.

Center for Educational Networking (CEN)

6412 Centurion Drive Suite 100
Lansing, MI 48917
517-908-3900, info@cenmi.org

Michigan Department of Education

Office of Special Education
P.O. Box 30008
Lansing MI 48909, 888-320-8384

Monroe County Community College

Tutoring and Student Success Center
1555 S. Raisinville Rd.
Monroe MI 48161, 734-348-4167

Monroe County Intermediate School District

1101 S. Raisinville Rd.
Monroe MI 48161, 734-242-5799
Parent Advisory Committee 734-342-8620
Monroe County Special Olympics 734-636-0271

Community Agencies and Resources

ARC of Monroe County 734-241-5881

Monroe Center for Independent Living

15515 S Dixie Hwy.
Monroe MI 48161, 734-682-5271

Comprehensive Services for the Developmentally Disabled

98 Winchester St.
Monroe MI 48161, 734-241-7011

Family Independence Agency

1300 S Telegraph Rd.
Monroe MI 48161, 734-243-7200

HOME Inc

852 W Elm Ave
Monroe MI 48162, 734-242-2177

Lake Erie Transit

1105 W 7th St
Monroe MI 48161, 734-242-6672

Legal Services-Southeastern MI

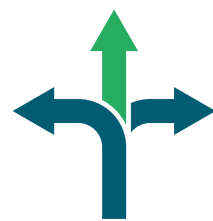
420 N 4th Ave
Ann Arbor MI 48104, 734-665-6181

Getting Started

You may find yourself traveling down a vastly different path than you once imagined. It may seem like a journey of twists and turns, surprising detours, and the occasional emergency zone. However, be assured that you are not traveling alone. Dozens of local and regional resources are available to you and your family. This "road map" will help you chart your course to the future ... a future filled with possibilities and exciting prospects. Just remember – you don't have to "go it alone". This is one road trip for which you'll have lots of company.



Which Way to Go?



When a young person comes to the intersection in the "road" of life and leaves the school atmosphere where s/he has been comfortable and cared for, it can be both exhilarating and stressful. Questions and decisions arise about residential,

employment, social, medical, and financial needs, and some opportunities may come in tandem with risks. The structure of the services formerly provided by the school environment must be now found elsewhere.

There will be new contacts to make, new agencies and professionals to become acquainted with, and the latest information to absorb. This can seem overwhelming, but – by using this guide – you can begin to feel empowered and exert control over the kinds of decisions you must make.

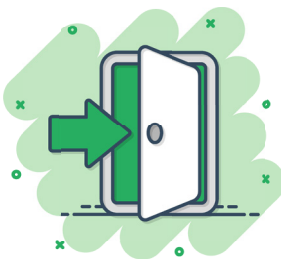
As each young person approaches the end of the formal school experience, students, parents, guardians, and school representatives must work closely in partnership. From this collaboration will grow a plan built on proper goals for the future ... and a map for moving smoothly into life as an adult in the community.

Our schools have the responsibility of aiding you during this planning process. This process is known as our transition services.

Where Will We End Up?

Everyone wants – and deserves – the best in life.

Appropriate transition planning will move students toward realistic goals for the future. From person to person, the ideal goals for life are different ... and very personal. All people should have a home, enjoy a healthy lifestyle, be financially secure, hold a job, have friends, be informed consumers, have enjoyable leisure activities and be active citizens of the community.



What Are These Services?

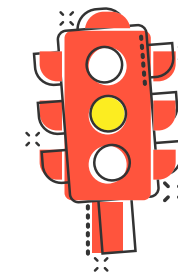
This process of planning and preparing for the completion of school moves young adults into community life. Transition activities are coordinated to maximize the student's life after school. Individualized information from the student, his/her parents, vocational evaluation, teacher reports, and other sources are included along with the Individualized Education Plan (IEP). This is reviewed each year, considering the student's preferences and interests and emphasizing training in integrated community settings. Family members, employers, and community agencies assume roles of specific responsibility within this plan. Self-advocacy training and suggestions for family support systems are other important parts of this road map for the future.

School Zone

Services Offered by Education Agencies

Schools have the responsibility to coordinate activities that will help students move into adult life and take part at home and in their communities. Open, ongoing communication is key to the success of the necessary partnership that includes parents, students, and educators. Transition planning may begin as early as age 14, earlier if proper. However, secondary transition planning must begin by age 16. Transition plans are reviewed annually and changed to meet the student's current needs.

Proceed with Caution



Law Enforcement Resources Professionals in the legal field and law enforcement officers are available to help young people in difficult situations. They should be regarded as partners in the transition process, partners who work diligently to keep our communities safe for all citizens, regardless of disabilities and challenges.

Hospital Zone

Medical Services and Supports



Consistent medical services are a vital part of any transition plan. Often, students may have chronic or recurring conditions that must be regularly addressed to keep the best quality of life.

Access to proper, affordable medical attention is supported through a network of individuals and agencies dedicated to improving the health and well-being of all consumers.

Curves Ahead

Be Prepared!



The road to transition is not always a straight one. You will need to "carry your traveling papers" with you. What kinds of documentation will you need?

- Birth certificate
- Social Security card
- State I.D. and/or Driver's License
- Records from service agencies
- Copies of IEPs
- Educational testing reports
- School progress reports and report cards
- Vocational assessments
- List of vocational courses taken
- Work record – dates, contacts, and phone numbers
- Family information and contacts
- Medical insurance card
- Immunization records
- Names and addresses of doctors, dentists, therapists
- Reports from therapists and specialists
- Dates and results of surgeries and medical procedures
- Letters of reference
- Job portfolio with resume

You may not be "traveling light," but you will be prepared to provide all the necessary records without digging through mounds of paperwork ... and you'll avoid delays. Adult agencies provide many different services to their clients, including vocational assistance, supported employment, housing, medical follow-along, counseling, case management, and recreational activities. It will be a help if you connect with these agencies early to help decide which services the young adult will need after leaving the school system.

• LIFE SKILLS • SOCIAL SKILLS • HOUSING OPTIONS • TRANSPORTATION • CAREERS/EMPLOYMENT • LEISURE
• RECREATION • FINANCES EDUCATION/TRAINING OPTIONS AND ALTERNATIVES • LEGAL CONCERNS
• MEDICAL AND SUPPORT SERVICES • COMMUNITY PARTICIPATION

